

INSIGHT

Actionable perspectives
on topics that impact wealth



Milliman Managed Risk Strategy

CREATING TRANSFORMATIONAL IMPROVEMENT IN THE RETIREMENT SAVINGS INDUSTRY

People nearing or in retirement are faced with a tremendous challenge—generate a reliable lifetime income that will survive an unpredictable story line.

The traditional means by which a reliable retirement income is generated seem all but gone. A slow growing economy, low yields, and the looming threat of inflation are making it difficult to meet both income and risk management needs. Investing too much in stocks may mean too much market risk, while too much in bonds may equate to a lack of growth. In some ways, it has become a zero sum game.

Milliman Pty Ltd (Milliman AU) and Milliman Financial Risk Management LLC are part of the Milliman group of companies, providing investment advisory, hedging, and consulting services for many of the world's largest financial and insurance companies. Milliman Financial Risk Management LLC has over 130 professionals and operates from three trading platforms around the world (Chicago, London, and Sydney).

Milliman Managed Risk Strategy

The Milliman Managed Risk Strategy is an intelligent portfolio risk management technique that seeks to:

- ▶ stabilize portfolio volatility around a target level,
- ▶ capture growth in up markets, and
- ▶ defend against losses during sustained market declines.

Milliman's financial risk management techniques were originally developed to help some of the world's largest financial institutions stabilize portfolio volatility and weather market crises. Today, both institutions and retail investors can access these same risk management benefits through the Milliman Managed Risk Strategy (via certain mutual funds, exchange-traded funds, collective investment trusts, target-date funds, and variable annuities).

Two Part Risk Management Strategy

VOLATILITY MANAGEMENT

The Milliman Managed Risk Strategy's volatility management process seeks to stabilize portfolio volatility around a shorter-term target level (e.g. one month). This aims to keep the risk level of a portfolio from increasing significantly during periods of market turbulence. An additional goal of the volatility management process is to seek additional returns based on our expectation that market volatility tends to decrease during extended periods of favorable market returns.

CAPITAL PROTECTION STRATEGY

The Milliman Managed Risk Strategy also employs a capital protection strategy that seeks to provide put-like protection on a portfolio in an effort to reduce losses during periods of significant and sustained market decline. One of Milliman's core disciplines is the operational capability to use futures contracts to manufacture a long-dated put option on a portfolio. When combined with volatility management, the strategy has the potential to be very powerful.

RISK MANAGEMENT PROCESS

1 BEGIN WITH FULL EXPOSURE

- ▶ Broad market access (e.g., large-cap, small-mid-cap, international, emerging).

2 APPLY MILLIMAN MANAGED RISK STRATEGY



- ▶ **Volatility management:** seeks to stabilize portfolio volatility around a target level.
- ▶ **Capital protection strategy:** seeks to defend against losses during sustained market declines.
- ▶ Risk management calculations are performed daily, and carried out via a global trading platform.

3 RESULT: RISK MANAGED EXPOSURE

- ▶ Hedge asset positions within a portfolio are continuously changed in an effort to stabilize volatility and reduce the impact of sustained market declines.

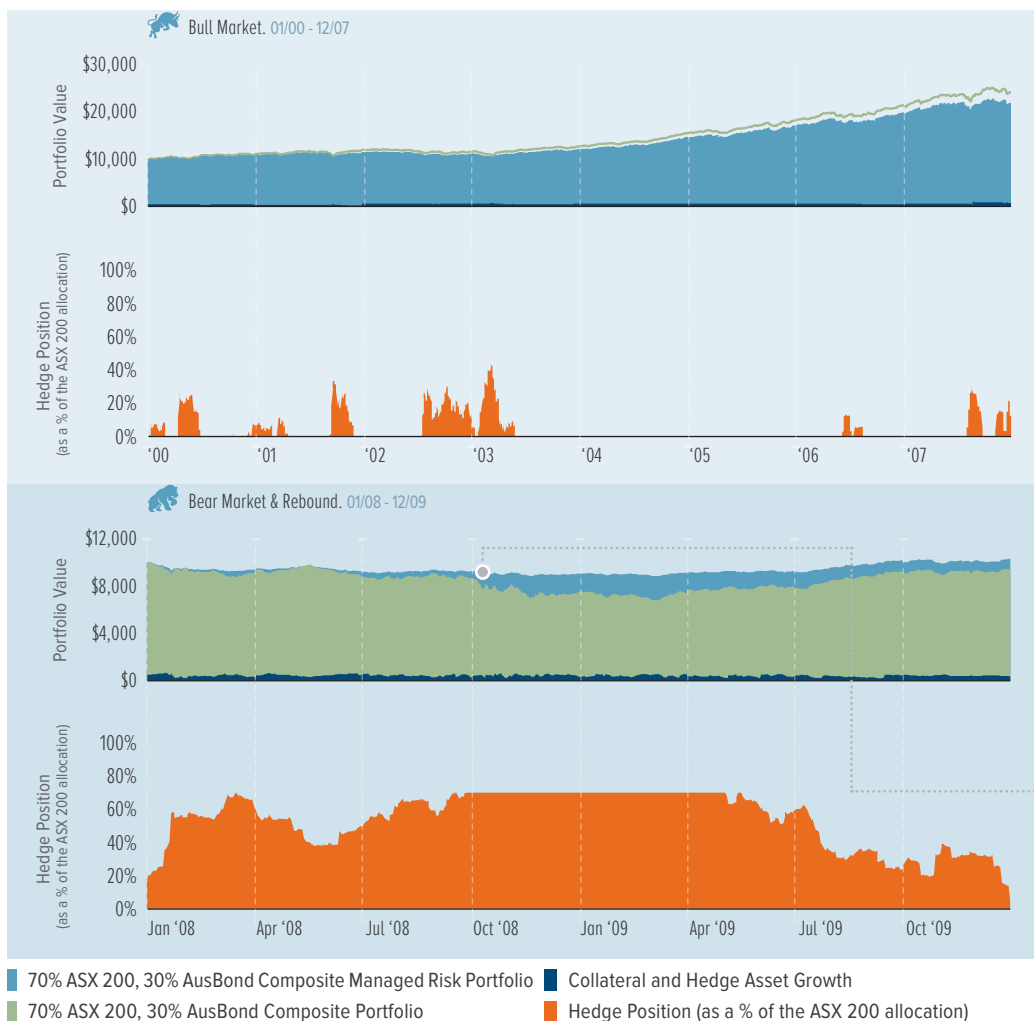
Dynamic hedge asset position typically includes holdings in cash and futures contracts, subject to market based thresholds. The charts above are for illustrative purposes only and do not represent the performance of any investment or index. Milliman's Managed Risk Strategy does not manage the underlying portfolio. No strategy or technique can guarantee returns or prevent losses.

INSIGHT

ILLUSTRATION

The chart below illustrates the hypothetical backtested returns of a portfolio allocation between 70% equities, and 30% fixed income.

MILLIMAN MANAGED RISK STRATEGY HYPOTHETICAL RETURNS



Source: Milliman Financial Risk Management LLC, 1/1/2000 - 31/12/2009. Methodology: The Milliman Managed Risk Strategy typically uses futures to replicate put optionality. The above chart was calculated with the following assumptions: Backtesting analysis for the Milliman Managed Risk Strategy relies on historical data, including fund returns, index returns, and interest rates. We assume that all dividends are reinvested. Fees are added to the fund returns when specified. All backtests are based on daily data. All backtests assume that trades can only occur once a day, at end of day prices. We assume that the hypothetical trades in the backtest can be executed at historical prices without affecting market prices. Unless otherwise specified, all performance results show performance for a buy and hold investor. We assume that all cash held in the fund earns interest based on the shortest interest rate input into the model. The underlying investment holdings of each fund are rebalanced on a periodic basis. The "unprotected" fund consists of static allocations to the underlying investment holdings. The Managed Risk fund includes the static allocations to the underlying investment holdings, as well as a futures based overlay to implement the Managed Risk Strategy. The futures based overlay is based solely on the output of the MMRS algorithm.

Performance data is hypothetical and for illustrative purposes only and is not reflective of any investment. Past performance is not indicative of future results. The hypothetical results reflected above were calculated with the benefit of hindsight and do not reflect actual trading results. Hypothetical and backtested returns invariably show attractive returns while actual results may not. There are often sharp differences between backtested/hypothetical returns and the results of actual management, including where the decision-making process may be adversely influenced by factors that arise in actual management but which are not anticipated in creating the hypothetical/backtested returns. It is not possible to invest in an index. The data shown is hypothetical and does not reflect or compare features of an actual investment, such as its objectives, costs and expenses, liquidity, safety, guarantees or insurance, fluctuation of principal or return, or tax features.

The underlying investment holdings is based on a 70/30 allocation among the S&P ASX 200 Index and the Bloomberg AusBond Composite 0+ Yr Index. The S&P ASX 200 Index is a commonly used benchmark comprised of 200 of the largest (by float-adjusted market capitalisation) index-eligible stocks listed on the Australian Stock Exchange. The Bloomberg AusBond Composite 0+ Yr Index is a commonly used benchmark for the Australian debt market and is comprised of Treasury, Semi-Govt, Supra/Sov, and Credit indices. It is a rules based, market value weighted index which includes bonds maturing in 0+ years.

MILLIMAN MANAGED RISK STRATEGY

BULL MARKETS

- ▶ Detect decreases in volatility
- ▶ Adjust hedge assets in order to increase effective equity exposure and seek to preserve market participation
- ▶ Dynamically adjust capital protection strategy level after favorable market performance to shield against potential market downturn

BEAR MARKETS

- ▶ Detect increases in volatility
- ▶ Adjust hedge assets in order to decrease effective equity exposure and seek to mitigate loss
- ▶ Dynamically adjust capital protection strategy level after major market decline to harvest any gains from the hedge assets, and reset market participation to a "normal" level

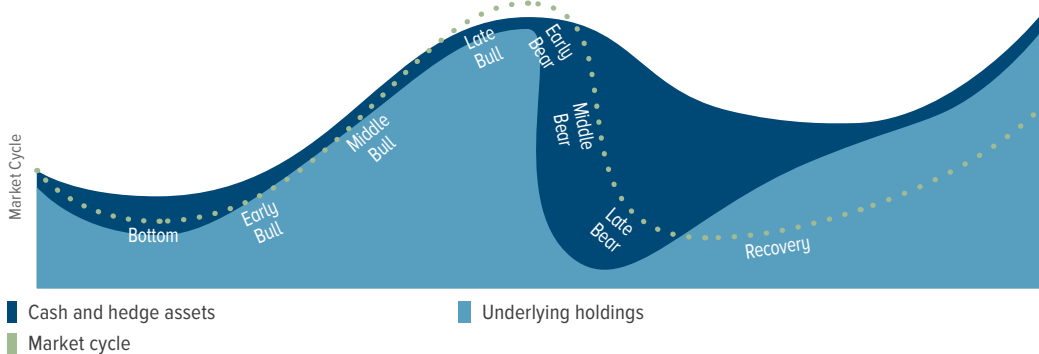
HYPOTHETICAL

SECOND WEEK OCTOBER 2008

- ▶ During the second week of October 2008, the unhedged portfolio would have lost 10.32%.
- ▶ The managed risk portfolio offset these losses by 7.74%, finishing down 2.58% for the week.
- ▶ This was accomplished by systematically increasing the protected portfolio's hedge asset level in an effort to maintain the target volatility level, and by harvesting gains from the hedge assets as they became deep in-the-money.
- ▶ Equity exposure was significantly reduced, and then increased steadily throughout 2009. This allowed the managed risk portfolio to participate in the rebound following the financial crisis.

INSIGHT

MOVEMENT OF MILLIMAN MANAGED RISK STRATEGY THROUGH A MARKET CYCLE



Source: Milliman Financial Risk Management LLC. The above chart does not reflect any particular actual market period but demonstrates the application of the Milliman Managed Risk Strategy to a market cycle. Performance data is hypothetical and for illustrative purposes only and is not reflective of any investment. Past performance is not indicative of future results. The data shown is hypothetical and does not reflect or compare features of an actual investment, such as its objectives, costs and expenses, liquidity, safety, guarantees or insurance, fluctuation of principal or return, or tax features.

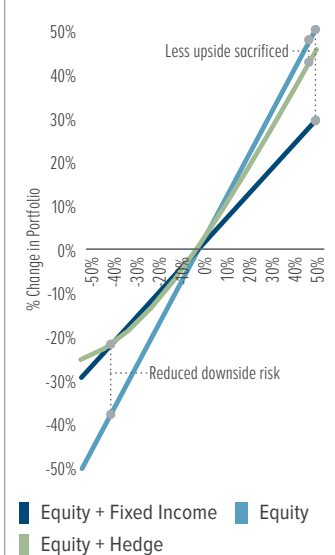
About Milliman

Milliman is one of the largest and most influential actuarial consulting and financial risk management firms in the world. Founded in 1947, Milliman has 55 offices in key locations worldwide that are home to over 3,000 professionals (e.g., actuaries, clinicians, economists). Milliman serves the full spectrum of business, financial, government, union, education, and non-profit organizations.

Milliman Pty Ltd (Milliman AU) and Milliman Financial Risk Management LLC are part of the Milliman group of companies, providing investment advisory, hedging, and consulting services for many of the world's largest financial and insurance companies. Milliman Financial Risk Management LLC has over 130 professionals and operates from three trading platforms around the world (Chicago, London, and Sydney).

Milliman's risk management approach is currently available in the Australian and New Zealand markets through our partnerships with Betashares, Innova, Maritime Super, Plato (distributed by Pinnacle), Sanlam (distributed by Colonial First State) and Lifetime Income.

HYPOTHETICAL HEDGING AS AN EFFICIENT RISK MANAGEMENT TOOL



Source: Milliman 2014. Holdings are hypothetical and do not represent the holdings of any particular investment portfolio. Past performance is not a guarantee of future results. There is no guarantee that the strategy will meet its objectives.

Milliman

FINANCIAL RISK MANAGEMENT

Creating transformational improvement in the retirement savings industry.

for more information:

AU.MILLIMAN.COM/FRM

+61 0 2 8090 9100

This document has been prepared by Milliman Pty Ltd ABN 51 093 828 418 AFSL 340679 (Milliman AU) for provision to Australian financial services (AFS) licensees and their representatives. It is provided to such persons on the condition that under no circumstances is this document or a copy of this document or extracts from it to be provided to persons who are retail clients. To the extent that this document may contain financial product advice, it is general advice only as it does not take into account the objectives, financial situation or needs of any particular person. To the extent any such general advice relates to financial products not covered by Milliman's AFS licence, the advice does not relate to any particular financial product and is not intended to influence any person in making a decision in relation to a particular financial product. No remuneration (including a commission) or other benefit is received by Milliman AU or its associates in relation to any advice in this document apart from that which it would receive without giving such advice. No recommendation, opinion, offer, solicitation or advertisement to buy or sell any financial products or acquire any services of the type referred to or to adopt any particular investment strategy is made in this document to any person. The information in relation to the types of financial products or services referred to in this document is intended only for the AFS licensees and their representatives to whom it is made available and reflects the opinions of Milliman AU at the time the information is prepared and may not be representative of the views of Milliman, Inc., Milliman Financial Risk Management LLC, or any other company in the Milliman group (Milliman group). If an AFS licensee or their representatives give any advice to their clients based on the information in this document they must take full responsibility for that advice having satisfied themselves as to the accuracy of the information and opinions expressed and must not expressly or impliedly attribute the advice or any part of it to Milliman AU or any other company in the Milliman group. An investment in an underlying portfolio, whether with or without Milliman Managed Risk Strategy (MMRS) is subject to market and other risks and no guarantee or assurance is given by Milliman that the use of MMRS in connection with an underlying portfolio will not give rise to losses or that the performance of the MMRS in relation to the underlying portfolio will remove volatility completely or to the extent depicted in an illustration or fully replace losses in the underlying portfolio or to the extent depicted. While generally assets used in connection with the MMRS are liquid, this may not be the case in all circumstances. Further, during periods of sustained market growth, the return to clients from the combination of an underlying portfolio and MMRS should be less than if a client had no MMRS. Any source material included in this document has been sourced from providers that Milliman AU believe to be reliable from information available publicly or with consent of the provider of the source material. To the fullest extent permitted by law, no representation or warranty, express or implied is made by any company in the Milliman group as to the accuracy or completeness of the source material or any other information in this document. Logos of companies that Milliman AU has partnered with for the development of products using MMRS have been reproduced with the consent of those companies but must not be taken to be a recommendation by those companies with respect to MMRS past performance information provided in this document is not indicative of future results and the illustrations are not intended to project or predict future investment returns. Any index performance information is for illustrative purposes only, does not represent the performance of any actual investment or portfolio. It is not possible to invest directly in an index. Any hypothetical, backtested data illustrated herein is for illustrative purposes only, and is not representative of any investment or product. **RESULTS BASED ON SIMULATED OR HYPOTHETICAL PERFORMANCE RESULTS HAVE CERTAIN INHERENT LIMITATIONS. UNLIKE THE RESULTS SHOWN IN AN ACTUAL PERFORMANCE RECORD, THESE RESULTS DO NOT REPRESENT ACTUAL TRADING. ALSO, BECAUSE THESE TRADES HAVE NOT ACTUALLY BEEN EXECUTED, THESE RESULTS MAY HAVE UNDER-OR OVER-COMPENSATED FOR THE IMPACT, IF ANY, OF CERTAIN MARKET FACTORS, SUCH AS LACK OF LIQUIDITY. SIMULATED OR HYPOTHETICAL TRADING PROGRAMS IN GENERAL ARE ALSO SUBJECT TO THE FACT THAT THEY ARE DESIGNED WITH THE BENEFIT OF HINDSIGHT. NO REPRESENTATION IS BEING MADE THAT ANY ACCOUNT WILL OR IS LIKELY TO ACHIEVE PROFITS OR LOSSES SIMILAR TO THESE BEING SHOWN.** For any hypothetical simulations illustrated, Milliman AU does not manage, control or influence the investment decisions in the underlying portfolio. The underlying portfolio in hypothetical simulations use historically reported returns of widely known indices. In certain cases where live index history is unavailable, the index methodology provided by the index may be used to extend return history. To the extent the index providers have included fees and expenses in their returns, this information will be reflected in the hypothetical performance. Many of the types of products and services described or referred to in this document involve significant risks and may not be suitable for all investors. No advice in relation to products or services of the type referred to should be given or any decision made or transaction entered into based on the information in this document. Any disclosure material for particular financial products should be obtained and read and all relevant risks must be fully understood and an independent determination made, after obtaining any required professional advice, that such financial products, services or transactions are appropriate having regard to the investor's objectives, financial situation or needs. All investment involves risks. Any discussion of risks contained in this document with respect to any type of product or service should not be considered to be a disclosure of all risks or a complete discussion of the risks involved. Investing in foreign securities is subject to greater risks including: currency fluctuation, economic conditions, and different governmental and accounting standards. There are also risks associated with futures contracts. Futures contract positions may not provide an effective hedge because changes in futures contract prices may not track those of the securities they are intended to hedge. Futures create leverage, which can magnify the potential for gain or loss and, therefore, amplify the effects of market, which can significantly impact performance. There are also risks associated with investing in fixed income securities, including interest rate risk, and credit risk.

Chicago

71 South Wacker Drive
Chicago, IL 60606
+1 855 645 5462

London

11 Old Jewry
London
EC2R 8DU
UK
+ 44 0 20 7847 1557

Sydney

32 Walker Street
North Sydney, NSW 2060
Australia
+ 61 0 2 8090 9100